

DESIGN FOR THE WELL-LIVED LIFE

# HOUSE & GARDEN

OCTOBER 2005

*all about*

## *Floors*

Trends in carpet, wood, tile, stone, leather



MAGIC CARPETS: THE STARKS AT HOME

CONTEMPORARY RUGS TRANSFER  
MODERN ART'S INTERPLAY OF COLOR  
AND ABSTRACT SHAPE TO THE FLOOR



**TIBETAN REINVENTED**

Design duo Diki Ongmo and Tim Linkins toy constantly with texture, pattern, and their own Tibetan and Australian heritages in their TibetSydney line. Pela Panden, at Doris Leslie Blau.



**BRIGHT IDEAS**

Angela Adams extends her mastery with bold, natural abstracts. Teddy/Jack o' Lantern, from \$1,090 for 6 by 9 feet. 800-255-9454.



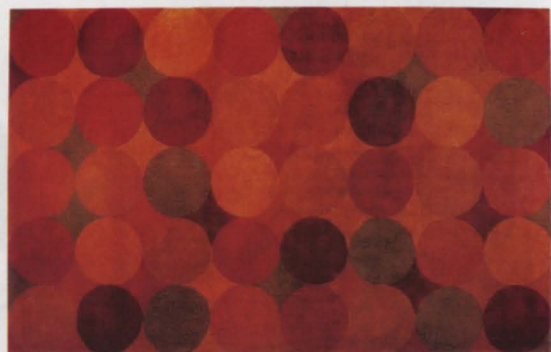
**HALL FLOWER**

Christine Van Der Hurd's 7-foot hand-tufted wool flower is the perfect focus for an entrance hall, where it will kick off a colorful decor. Deliriously Daisy, \$6,120, from Van Der Hurd Studio. In NYC, 212-213-6541.



**DIGITAL PLUSH**

Techno from New Moon turns the bar code into a chic statement for a teen's room. Tibetan wool in magenta, \$88 a square foot. 800-863-0442.



**DARING DOTS**

Hokanson's graphic dots in hand-tufted silk show off nicely under a modern glass dining table, though the subdued colors also accommodate dark wood.



**INNOVATIVE INDIAN**

Michaelian & Kohlberg continues its partnership with Indian weavers, incorporating their ideas for the kaleidoscopic hand-dyed rugs in the Out of India collection. Divali in wool, at Michaelian & Kohlberg.



**MOD FLORAL**

Spanish designer Patricia Urquiola's industrial floral cozies up a home office or anywhere where technology sets the tone. Flower in Green/Cream, from \$2,000, at Gandia Blasco. In NYC, 212-421-6701.



**NATURAL ABSTRACT**

Designer Jamie Drake makes pop art with an oversized pattern reminiscent of wood grain in vivid colors. Bois for Roubini.

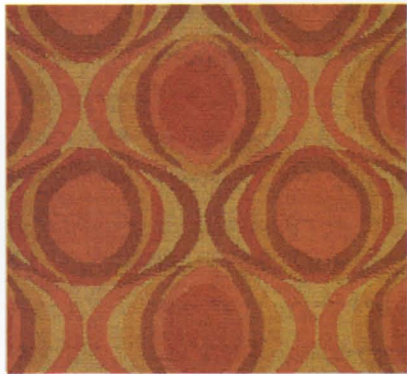


**MAIN EVENT**

Fabric designer Kim Parker's exuberant floral in autumnal colors suits a cozy study in a country house. Oshun, \$75 a square foot. [therugcompany.info](http://therugcompany.info). ▷

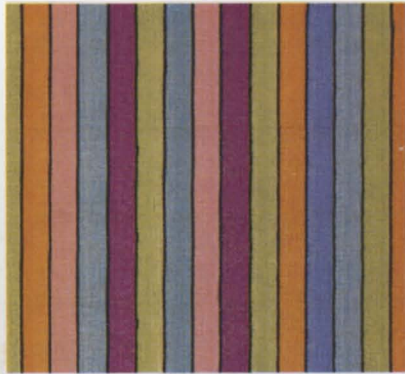
# Trade Secrets **WALL-TO-WALL**

WALL-TO-WALL SHOULD MATCH UP WITH A ROOM'S COLORS, PURPOSE, AND SPIRIT



## **AUBUSSON UPDATE**

Give a formal room a bit of modern pop with a carpet that combines the time-honored weaving techniques of Aubusson with a contemporary pattern and radiant color. Drops by Tai Ping.



## **BRIGHT STRIPES**

Christine Van Der Hurd's bold stripes coordinate with her line of fabrics. Use these in a stairway or other enclosed space for an amusing, vibrant look. Out of Line #4, \$60 a square foot, [vanderhurdstudio.com](http://vanderhurdstudio.com).



## **SIMPLE SWEDISH**

A strong starting point, this Gooseeye pattern works well with classic Scandinavian white chairs or with modern forms. Kasthall Hägga 909, from Country Swedish.